

Fire Lane

1199 Fire Ln
Cedar Park, TX 78613

+/- 25.91 Acres

Pricing available upon request

- Great location - high visibility from 183A and Little Elm
- Beautiful views
- Roadways, water and sewer to be built and brought to site by City of Cedar Park and Seller



Pohl Partners, Inc.
10800 Pecan Park Blvd, Ste. 125
O 512.335.5577
F 512.335.1309
www.pohlpartners.com

The information contained herein was obtained from sources deemed reliable; however, Pohl Partners, Inc makes no guarantees, warranties or representation to the completeness or accuracy thereof. The presentation of this real estate information is subject to errors, omissions, change of price, prior sale or lease or withdrawal without notice.

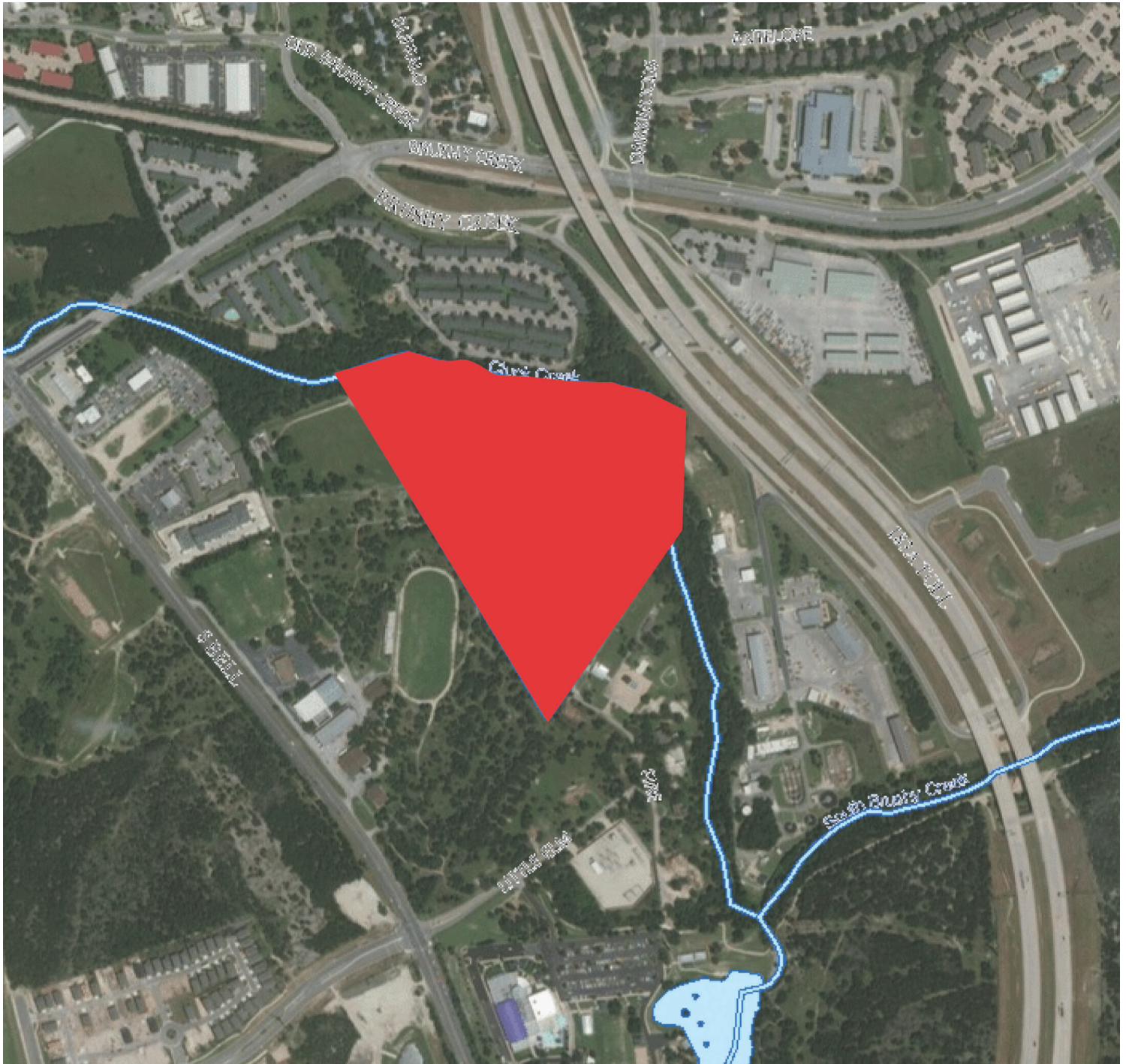
Demographics

	1 MILE	3 MILE	5 MILE
2018 population	11,246	87,612	216,850
Average HH Income	\$104,345	\$102,617	\$117,110
Traffic Count	30,000 vehicles per day (2018)		

Fire Lane

1199 Fire Ln
Cedar Park, TX 78613

+/- 25.91 Acres

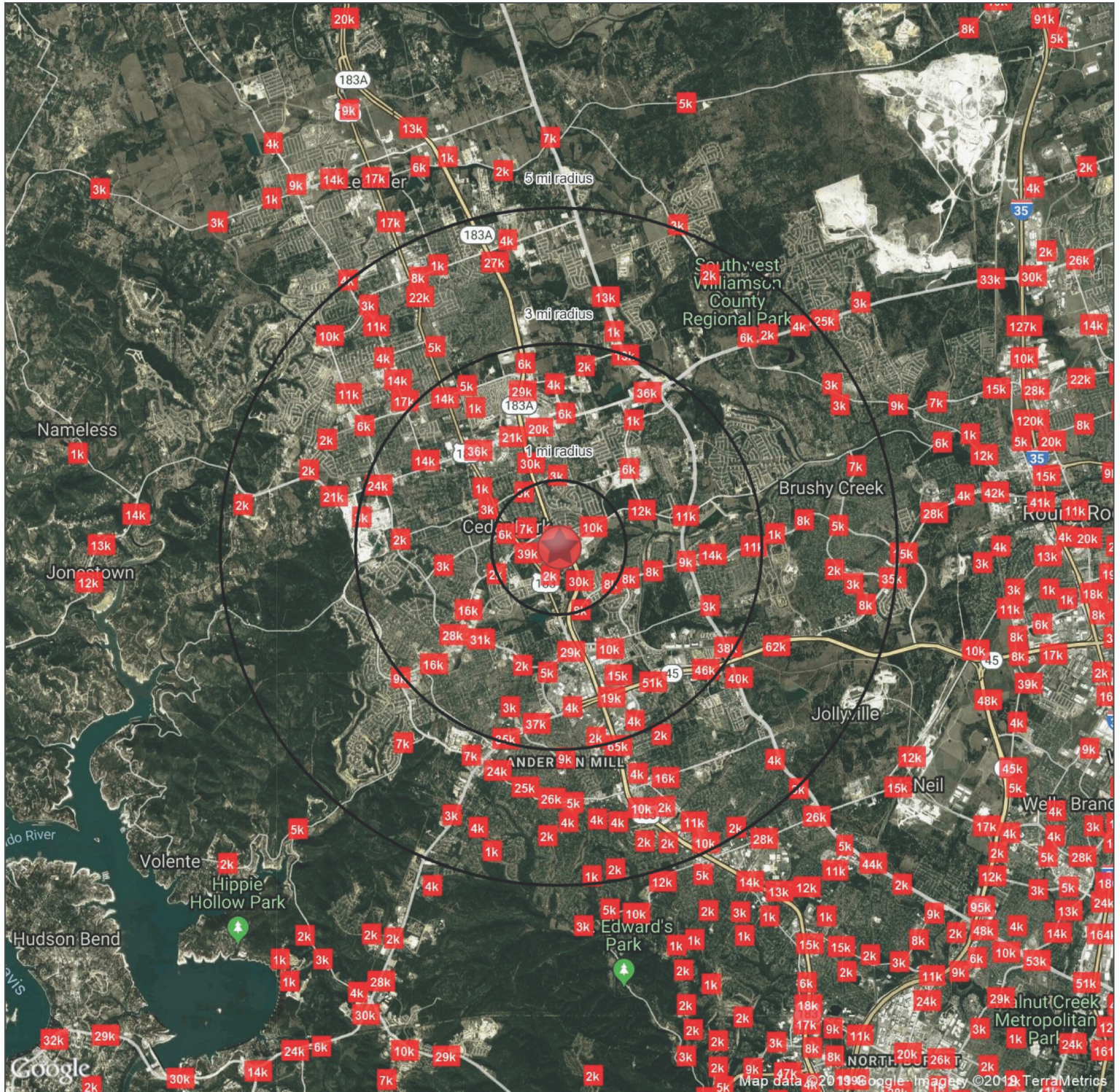


Pohl Partners, Inc.
10800 Pecan Park Blvd, Ste. 125
O 512.335.5577
F 512.335.1309
www.pohlpartners.com

The information contained herein was obtained from sources deemed reliable; however, Pohl Partners, Inc makes no guarantees, warranties or representation to the completeness or accuracy thereof. The presentation of this real estate information is subject to errors, omissions, change of price, prior sale or lease or withdrawal without notice.

Fire Lane

Cedar Park, TX 78613



Demographics

	1 mi radius	3 mi radius	5 mi radius
Population	11,246	87,612	216,962
Households	4,035	32,179	77,942
Population Median Age	32.0	34.5	35.1
5 Yr Pop Growth (Total%)	16.4%	18.6%	17.3%

Contact Information

Name **Bill Pohl**
Email **bpohl@pohlbrown.com**
Phone **512.335.5577**

Prepared By

Prepared For

FULL PROFILE

2000-2010 Census, 2018 Estimates with 2023 Projections

Calculated using Weighted Block Centroid from Block Groups

Lat/Lon: 30.5007/-97.8074

RF1

Fire Lane

Cedar Park, TX 78613

1 mi radius 3 mi radius 5 mi radius

POPULATION	2018 Estimated Population	11,246	87,612	216,850
	2023 Projected Population	13,096	103,949	254,438
	2010 Census Population	8,284	65,467	173,172
	2000 Census Population	2,710	34,389	102,981
	Projected Annual Growth 2018 to 2023	3.3%	3.7%	3.5%
	Historical Annual Growth 2000 to 2018	17.5%	8.6%	6.1%
HOUSEHOLDS	2018 Estimated Households	4,035	32,179	77,910
	2023 Projected Households	4,513	35,988	87,020
	2010 Census Households	3,023	24,775	64,696
	2000 Census Households	965	11,714	36,345
	Projected Annual Growth 2018 to 2023	2.4%	2.4%	2.3%
	Historical Annual Growth 2000 to 2018	17.7%	9.7%	6.4%
AGE	2018 Est. Population Under 10 Years	16.1%	14.3%	14.1%
	2018 Est. Population 10 to 19 Years	14.4%	14.4%	14.5%
	2018 Est. Population 20 to 29 Years	14.4%	12.9%	11.9%
	2018 Est. Population 30 to 44 Years	27.2%	25.2%	25.3%
	2018 Est. Population 45 to 59 Years	17.3%	19.5%	20.0%
	2018 Est. Population 60 to 74 Years	8.1%	10.1%	10.5%
	2018 Est. Population 75 Years or Over	2.5%	3.6%	3.6%
	2018 Est. Median Age	32.0	34.5	35.1
MARITAL STATUS & GENDER	2018 Est. Male Population	49.6%	49.1%	49.3%
	2018 Est. Female Population	50.4%	50.9%	50.7%
	2018 Est. Never Married	26.6%	28.6%	28.7%
	2018 Est. Now Married	54.2%	51.0%	53.3%
	2018 Est. Separated or Divorced	16.5%	16.4%	14.5%
	2018 Est. Widowed	2.7%	4.0%	3.5%
INCOME	2018 Est. HH Income \$200,000 or More	13.3%	10.1%	12.8%
	2018 Est. HH Income \$150,000 to \$199,999	14.6%	11.1%	12.1%
	2018 Est. HH Income \$100,000 to \$149,999	24.2%	22.1%	21.1%
	2018 Est. HH Income \$75,000 to \$99,999	13.1%	14.0%	14.5%
	2018 Est. HH Income \$50,000 to \$74,999	14.1%	17.3%	15.7%
	2018 Est. HH Income \$35,000 to \$49,999	10.8%	11.2%	10.5%
	2018 Est. HH Income \$25,000 to \$34,999	4.2%	5.7%	5.7%
	2018 Est. HH Income \$15,000 to \$24,999	3.6%	4.6%	4.1%
	2018 Est. HH Income Under \$15,000	2.0%	3.8%	3.6%
	2018 Est. Average Household Income	\$104,345	\$102,617	\$117,110
	2018 Est. Median Household Income	\$106,724	\$92,427	\$98,139
	2018 Est. Per Capita Income	\$37,444	\$37,696	\$42,085
	2018 Est. Total Businesses	283	3,699	6,282
	2018 Est. Total Employees	2,223	36,640	57,828

This report was produced using data from private and government sources deemed to be reliable. The information herein is provided without representation or warranty.

FULL PROFILE

2000-2010 Census, 2018 Estimates with 2023 Projections

Calculated using Weighted Block Centroid from Block Groups

Lat/Lon: 30.5007/-97.8074

RF1

Fire Lane

Cedar Park, TX 78613

1 mi radius 3 mi radius 5 mi radius

RACE	2018 Est. White	74.3%	75.8%	74.2%
	2018 Est. Black	4.1%	4.7%	5.5%
	2018 Est. Asian or Pacific Islander	10.3%	10.1%	11.6%
	2018 Est. American Indian or Alaska Native	0.4%	0.5%	0.5%
	2018 Est. Other Races	10.9%	8.9%	8.3%
HISPANIC	2018 Est. Hispanic Population	2,979	19,014	42,225
	2018 Est. Hispanic Population	26.5%	21.7%	19.5%
	2023 Proj. Hispanic Population	27.0%	22.1%	19.9%
	2010 Hispanic Population	18.3%	17.3%	16.7%
EDUCATION (Adults 25 or Older)	2018 Est. Adult Population (25 Years or Over)	7,029	57,066	142,899
	2018 Est. Elementary (Grade Level 0 to 8)	0.6%	1.3%	1.5%
	2018 Est. Some High School (Grade Level 9 to 11)	2.8%	2.3%	2.5%
	2018 Est. High School Graduate	15.4%	17.0%	15.4%
	2018 Est. Some College	21.9%	22.7%	21.2%
	2018 Est. Associate Degree Only	7.6%	8.6%	8.4%
	2018 Est. Bachelor Degree Only	33.7%	32.5%	33.9%
	2018 Est. Graduate Degree	18.0%	15.6%	17.1%
HOUSING	2018 Est. Total Housing Units	4,100	32,610	79,140
	2018 Est. Owner-Occupied	54.2%	55.1%	61.3%
	2018 Est. Renter-Occupied	44.2%	43.6%	37.2%
	2018 Est. Vacant Housing	1.6%	1.3%	1.6%
HOMES BUILT BY YEAR	2010 Homes Built 2005 or later	4.7%	10.3%	7.9%
	2010 Homes Built 2000 to 2004	58.1%	44.2%	39.5%
	2010 Homes Built 1990 to 1999	20.1%	30.1%	28.4%
	2010 Homes Built 1980 to 1989	17.6%	17.5%	18.6%
	2010 Homes Built 1970 to 1979	8.6%	10.8%	11.6%
	2010 Homes Built 1960 to 1969	1.6%	1.7%	1.7%
	2010 Homes Built 1950 to 1959	2.0%	1.4%	1.4%
	2010 Homes Built Before 1949	1.7%	2.0%	1.7%
HOME VALUES	2010 Home Value \$1,000,000 or More	0.3%	0.2%	0.3%
	2010 Home Value \$500,000 to \$999,999	2.4%	4.8%	7.6%
	2010 Home Value \$400,000 to \$499,999	9.5%	10.7%	11.6%
	2010 Home Value \$300,000 to \$399,999	26.1%	21.9%	24.2%
	2010 Home Value \$200,000 to \$299,999	54.1%	51.1%	43.8%
	2010 Home Value \$150,000 to \$199,999	13.4%	17.9%	17.5%
	2010 Home Value \$100,000 to \$149,999	5.5%	5.7%	6.5%
	2010 Home Value \$50,000 to \$99,999	1.4%	1.8%	1.8%
	2010 Home Value \$25,000 to \$49,999	1.2%	1.6%	1.1%
	2010 Home Value Under \$25,000	1.8%	1.5%	1.5%
	2010 Median Home Value	\$259,043	\$256,306	\$268,926
	2010 Median Rent	\$1,083	\$1,153	\$1,128

This report was produced using data from private and government sources deemed to be reliable. The information herein is provided without representation or warranty.

FULL PROFILE

2000-2010 Census, 2018 Estimates with 2023 Projections

Calculated using Weighted Block Centroid from Block Groups

Lat/Lon: 30.5007/-97.8074

RF1

Fire Lane		1 mi radius	3 mi radius	5 mi radius
Cedar Park, TX 78613				
LABOR FORCE	2018 Est. Labor Population Age 16 Years or Over	8,429	67,206	166,269
	2018 Est. Civilian Employed	76.3%	71.2%	71.7%
	2018 Est. Civilian Unemployed	1.0%	1.7%	1.7%
	2018 Est. in Armed Forces	0.4%	0.1%	0.1%
	2018 Est. not in Labor Force	22.4%	26.9%	26.5%
	2018 Labor Force Males	48.9%	48.2%	48.6%
	2018 Labor Force Females	51.1%	51.8%	51.4%
OCCUPATION	2010 Occupation: Population Age 16 Years or Over	6,298	49,392	121,535
	2010 Mgmt, Business, & Financial Operations	20.7%	18.1%	19.5%
	2010 Professional, Related	30.6%	32.4%	31.2%
	2010 Service	12.5%	11.8%	11.8%
	2010 Sales, Office	26.9%	27.1%	26.8%
	2010 Farming, Fishing, Forestry	-	0.1%	0.1%
	2010 Construction, Extraction, Maintenance	3.7%	4.8%	5.0%
	2010 Production, Transport, Material Moving	5.6%	5.8%	5.6%
	2010 White Collar Workers	78.2%	77.6%	77.5%
	2010 Blue Collar Workers	21.8%	22.4%	22.5%
TRANSPORTATION TO WORK	2010 Drive to Work Alone	83.3%	82.3%	79.8%
	2010 Drive to Work in Carpool	6.9%	7.0%	7.5%
	2010 Travel to Work by Public Transportation	0.5%	1.0%	1.1%
	2010 Drive to Work on Motorcycle	0.5%	0.2%	0.2%
	2010 Walk or Bicycle to Work	1.3%	1.3%	1.3%
	2010 Other Means	0.1%	0.1%	0.3%
	2010 Work at Home	7.3%	8.1%	9.8%
TRAVEL TIME	2010 Travel to Work in 14 Minutes or Less	28.3%	24.2%	21.0%
	2010 Travel to Work in 15 to 29 Minutes	40.8%	38.3%	39.6%
	2010 Travel to Work in 30 to 59 Minutes	34.8%	35.4%	35.9%
	2010 Travel to Work in 60 Minutes or More	6.2%	7.4%	7.8%
	2010 Average Travel Time to Work	22.0	23.6	24.7
CONSUMER EXPENDITURE	2018 Est. Total Household Expenditure	\$291 M	\$2.29 B	\$6.10 B
	2018 Est. Apparel	\$10.3 M	\$80.8 M	\$216 M
	2018 Est. Contributions, Gifts	\$22.6 M	\$172 M	\$473 M
	2018 Est. Education, Reading	\$13.3 M	\$100 M	\$273 M
	2018 Est. Entertainment	\$16.6 M	\$130 M	\$348 M
	2018 Est. Food, Beverages, Tobacco	\$42.6 M	\$339 M	\$896 M
	2018 Est. Furnishings, Equipment	\$10.5 M	\$81.5 M	\$219 M
	2018 Est. Health Care, Insurance	\$23.9 M	\$191 M	\$504 M
	2018 Est. Household Operations, Shelter, Utilities	\$89.8 M	\$706 M	\$1.88 B
	2018 Est. Miscellaneous Expenses	\$4.14 M	\$32.8 M	\$86.4 M
	2018 Est. Personal Care	\$3.75 M	\$29.5 M	\$78.6 M
	2018 Est. Transportation	\$53.4 M	\$425 M	\$1.12 B

This report was produced using data from private and government sources deemed to be reliable. The information herein is provided without representation or warranty.

